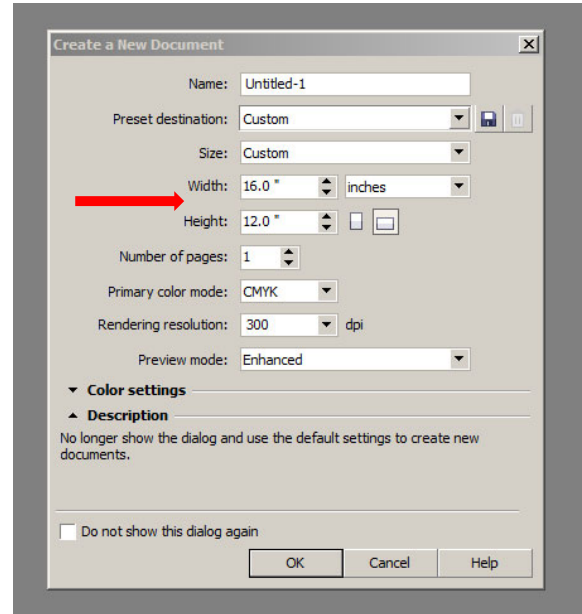
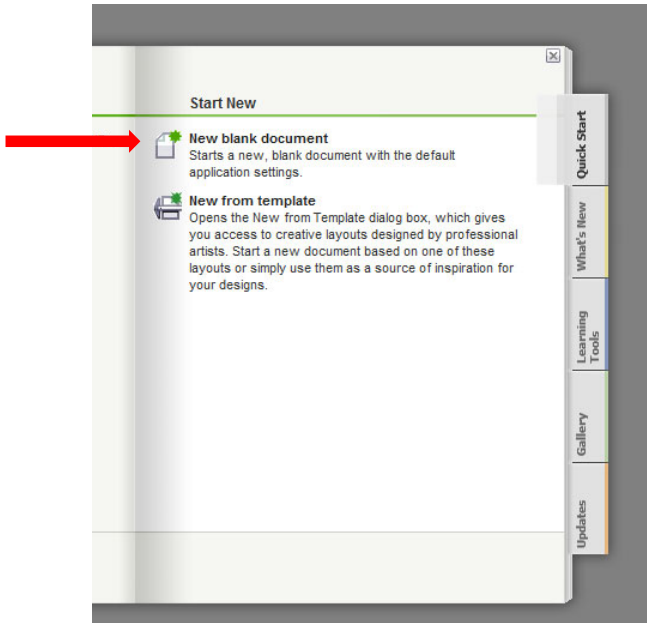


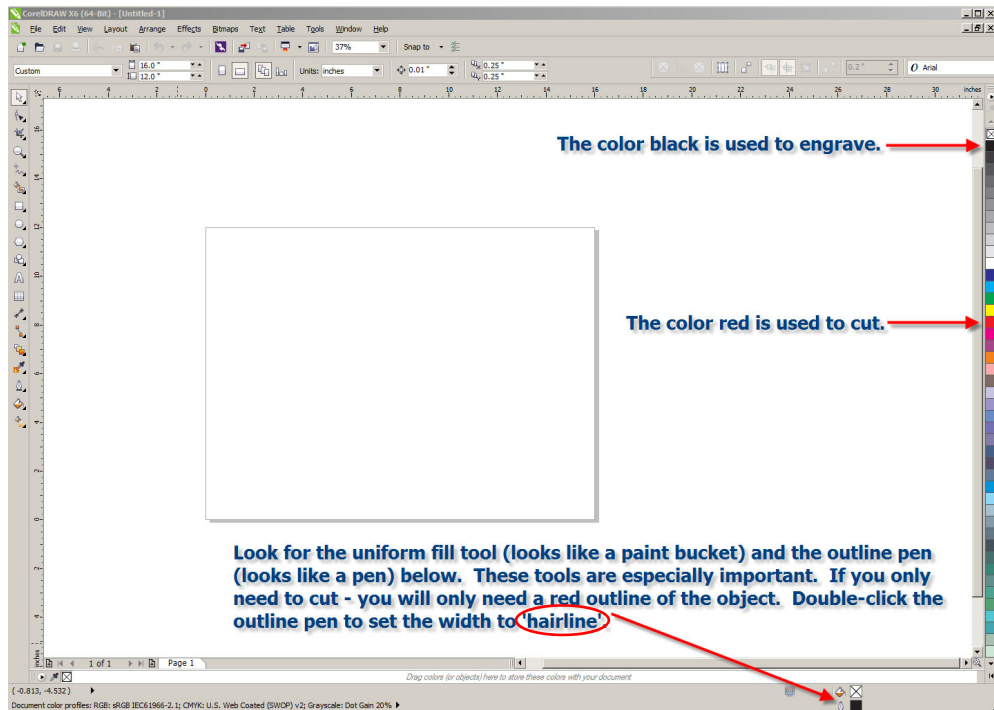
Designing a Project to be cut or engraved on the Universal CO2 Laser

1. Draw the object that you wish to be cut or engraved using Corel Draw. The computer lab (PEAH 125) and each of the computers in the STEM Lab (PEAH 317) has Corel Draw installed.
 - a. Set up your new document in to match the specifications of the laser



If you are using the **RED** laser you will use a document size of 16" X 12". If you are using the **BLUE** laser you will use a document size of 24" X 12".

- b. Design the objects that you wish to be cut or engraved.



- c. Save your drawing to be cut or engraved on the laser. Go to the dropdown file menu and select 'Save as'. **Save your drawing as a CDR File.**

d. Open your drawing in the STEM Lab in Corel Draw. Click 'File' – 'Print'.

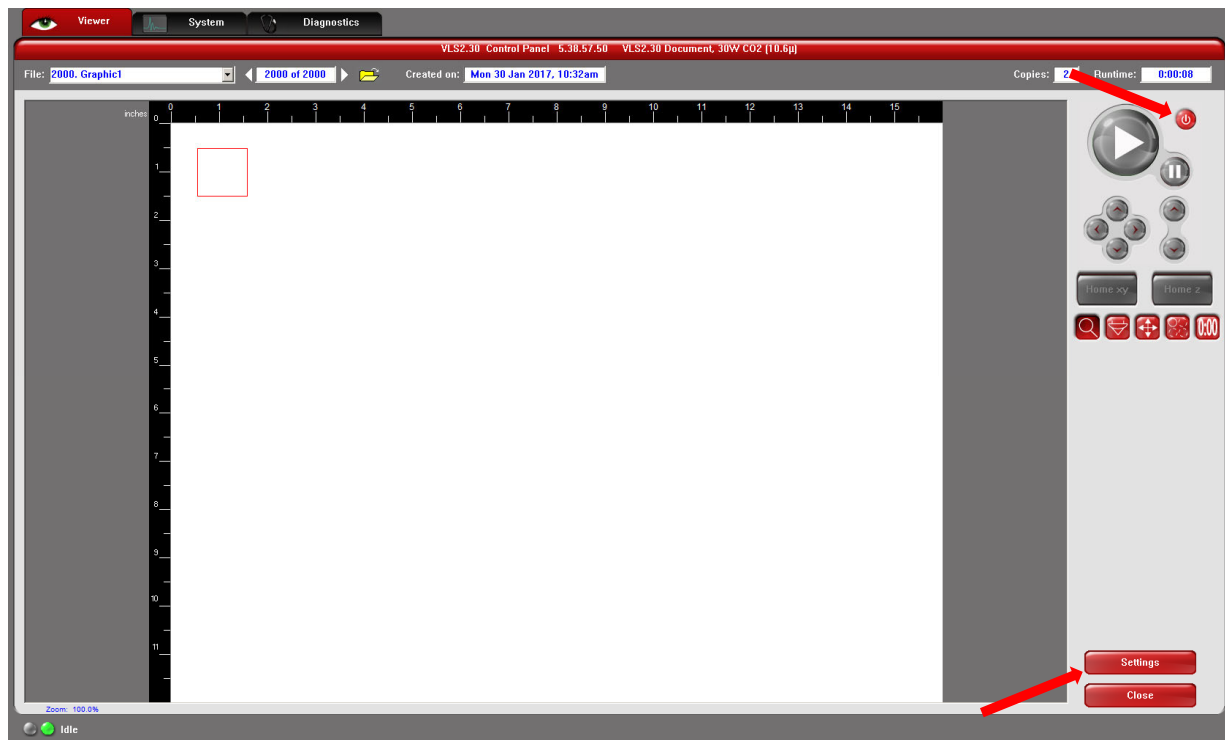
e. Open the VLS Control Panel (UCP) by clicking on the icon on the desktop or the task bar.



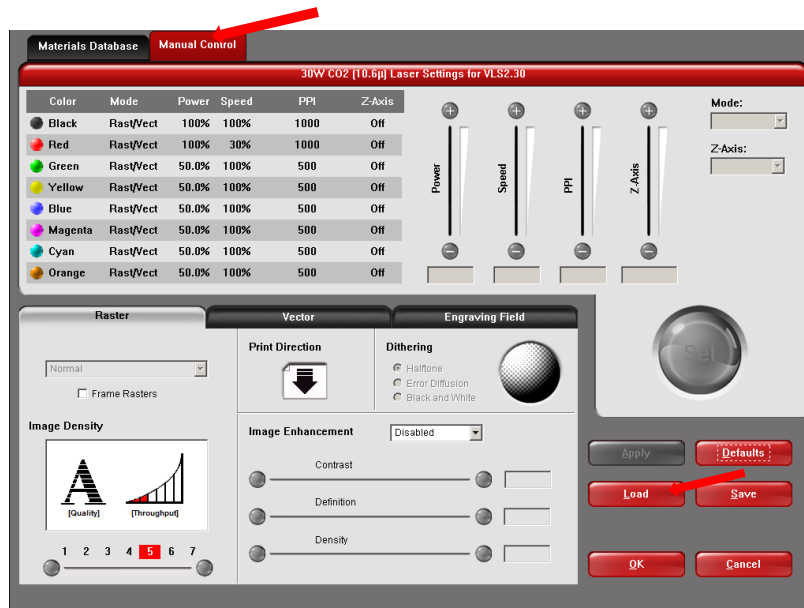
f. Power on the laser by clicking the 'power button' on the UPC.



g. *Remember to turn on the fan behind the lasers.



h. Click on the 'Settings' button and then the "Load" to select the appropriate material such as carboard, cardstock, or 1/8" (.125.) plywood or you can select 'Manual Control' tab. You will select the correct materials or adjust the settings for the type of material that you are using.



- i. *Be sure to hit the 'Set' Button and then "Apply" and "OK".
- j. Check that your material is loaded properly.
- k. Click the green 'Play/Print' button.